
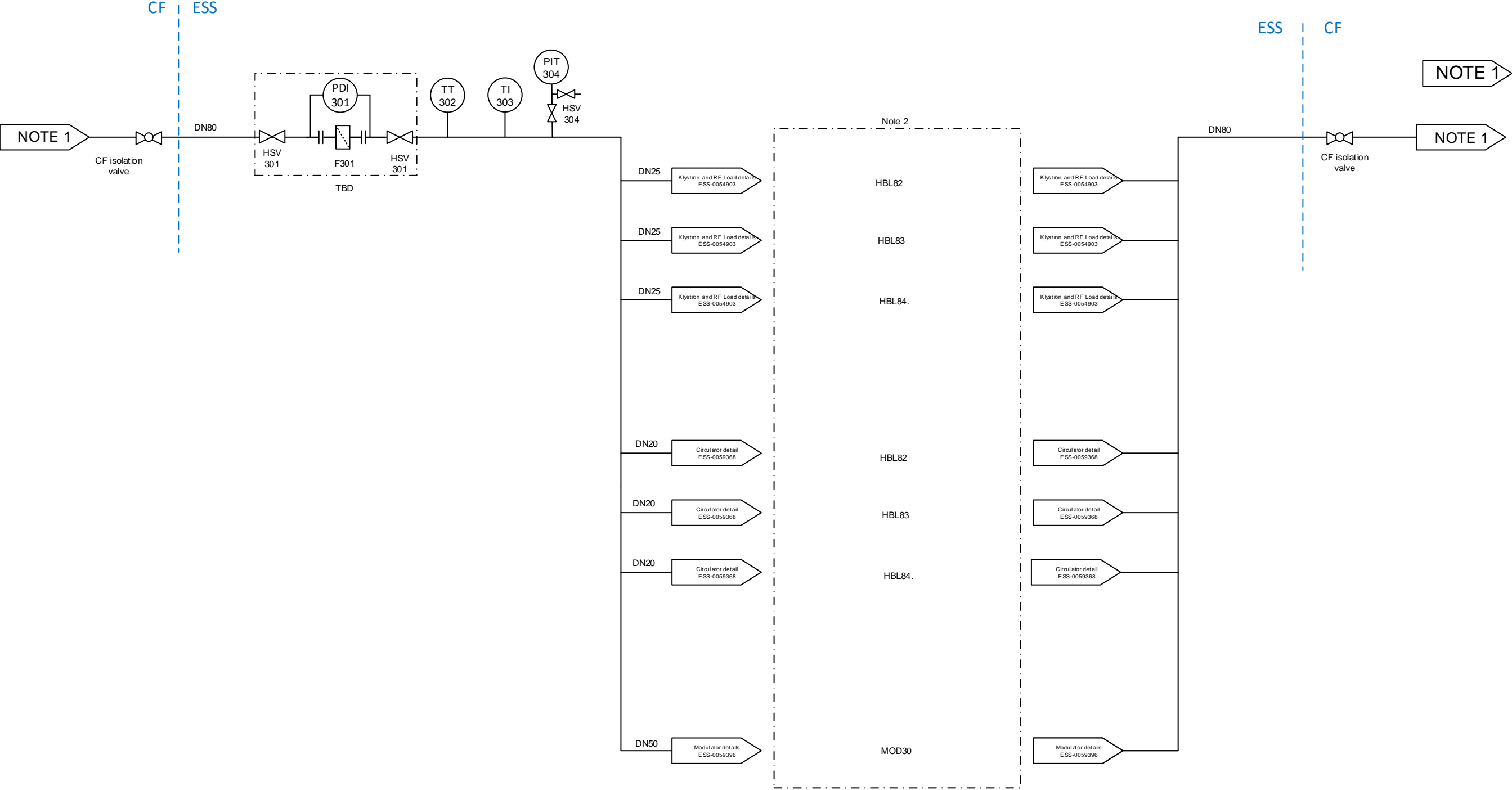


NOTES:
1. PS0155---8-G---008
2. Repeated for every 4 Klystron MBL01-MBL36 & HBL01-HBL84 and for every second Modulator MOD01-MOD30. For HBL Klystron kluster 82-84 and Modulator 30 see sheet 2.


For Legend see ESS-0033888
Design pressure 10 bar(g)
Design temp Max/Min 50/10 °C

Title MBL HBL RF cell overview - CWM		Approved by -		Signature	 EUROPEAN SPALLATION SOURCE
		Designed / changed by AC		Signature	
Type of drawing P&ID	Date (this version) 2016/12/19	Size A3	Sheet 1 of 2	Scale -	Drawing No ESS-0054904 Revision 1



NOTES:
1. PS0155---8-G---008
2. Repeated for every 4 Klystron MBL01-MBL36 & HBL01-HBL84 and for every second Modulator MOD01-MOD30. For MBL klystrons, HBL Klystron kluster 01-81 and Modulators 01-29 see sheet 1.

For Legend see ESS-0033888
Design pressure 10 bar(g)
Design temp Max/Min 50/10 °C

Title MBL HBL RF cell overview - CWM		Approved by -		Signature	 EUROPEAN SPALLATION SOURCE
		Designed / changed by AC		Signature	
Type of drawing P&ID	Date (this version) 2016/12/19	Size A3	Sheet 2 of 2	Scale -	Drawing No ESS-0054904 Revision 1